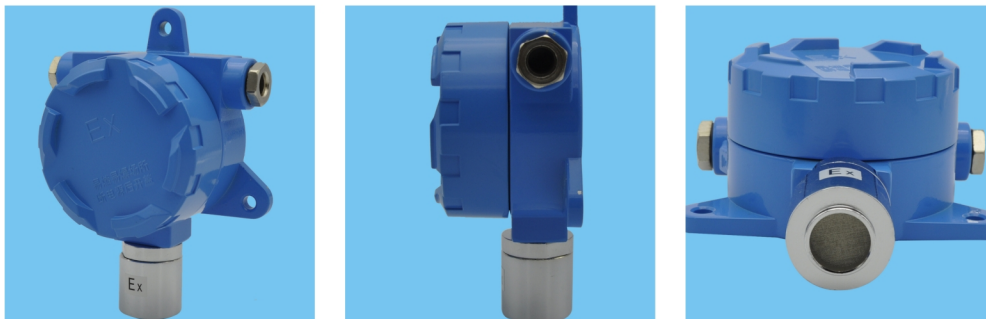


## Bus system gas detection transmitter

The series of 485 main line gas detection alarm system adopts non-standard agreement or MODBUS protocol for data collection and transmission. The intelligent transmitter node acquisition collects and detects the gas concentration on the spot. The host round tests various nodes with intelligent background software, and monitoring the gas concentration changes in real-time. Our product uses the bus-system, having strong anti-jamming capability, convenient layout and simple wiring. At the same time, it also provides an controlling external device (exhaust fan, solenoid valve, etc.) of the switch output. The detector detects gas concentration with natural diffusion mode, which uses the imported sensors and has a good sensitivity and repeatability.

The instrument uses the embedded micro-controller control technology, simple menu operation, complete functions and high reliability. Bus-system gas detection transmitter adopts aluminum shell material with high strength, heat resistance and corrosion resistance. Our product is suitable for the detection of poisonous and harmful, inflammable and explosive gas in the air and has been widely used in metallurgy, power plant, chemical industry, mine, tunnel, tunnels, underground pipeline and other places, effectively preventing the happening of the accident.



### Basic parameters

Size : 144mm\*90mm\*74mm  
Weight : about 1130 g  
Sensor types : electrochemistry method  
(gas catalytic combustion type, special separately)  
Destination gas : oxygen(O<sub>2</sub>), gas (EX)  
Poisonous and harmful gases(CO, H<sub>2</sub>S, NH<sub>3</sub>, CL<sub>2</sub>, etc.)  
Response time : ≤30s(O<sub>2</sub>) ; ≤40s(CO) ; ≤20s(EX)  
Working pattern : continuous work  
Working voltage : DC24V  
Output signal : 485 digital signal  
Output : four four wire(two power cord, two signal lines)  
Temperature range : -20°C-50°C  
Humidity : 15%-90%RH(No condensation)  
Explosion-proof number : CE10-1084  
Explosion-proof marks : Exd II CT6  
Connection mode : four wire connection mode,  
in strict accordance with the manual connection  
Transmission cables : two core shielded cable or a four  
core shielded cable, Section 2\*1.5mm<sup>2</sup>\*2 or 4\*1.5mm<sup>2</sup>  
Transmission distance : <1000m

